

2024 SWIMMING POOL/SPA NEWSLETTER

Gates & Fencing - The First Line of Prevention

A pool is one of the highlights and selling points at many apartments, condominiums, homeowners associations and hotels, but it can also be a dangerous lure to children.

According to the Centers for Disease Control and Prevention, drowning is the leading cause of death for children ages 1-4. A common drowning scenario involves unsupervised young children gaining access to the pool when their guardians are distracted or sleeping. A well-maintained pool fence and self-closing gate is one of the best ways to prevent this type of accidental drowning.

The Gate:

- Must be self-closing and self-latching.
- Must never be propped open.

Remember:

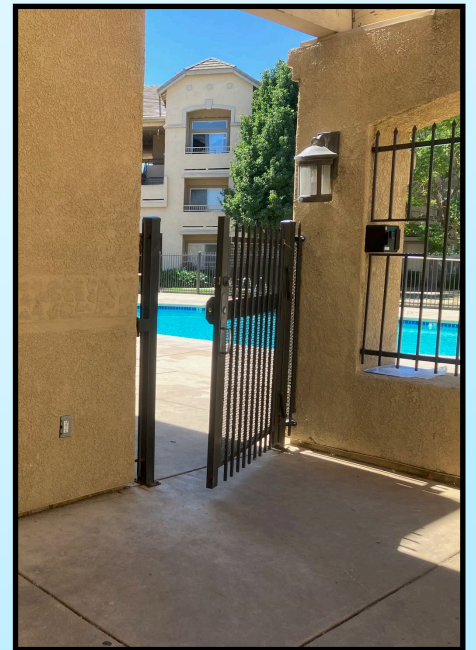
- Check gates for proper closing and latching functions year-round.
- Be aware of adjacent items that can be used to prop open gates (e.g. large rocks or bricks). Remove these items from the area.
- Inform residents that if they leave a gate propped open, a young child could access the pool and drown quickly and silently.

The Fence

- Must not have gaps or openings greater than 4 inches.

Remember:

- Check below fence to see if there are any gaps greater than 2" over dirt.
- Check bolts where fence attaches to structures.
- Make sure all parts of the fence are secure.



Dates and Times:

Wednesday, **March 20, 2024 9-11am**
Wednesday, **April 17, 2024 1-3pm**
Wednesday, **May 22, 2024 1-3pm**
Tuesday, **June 18, 2024 9-11am**
Wednesday, **July 17, 2024 9-11am**

Location: Sacramento County EMD
11080 White Rock Rd, Suite 200,
Rancho Cordova, CA 95670

Sign up for a FREE Pool/Spa Workshop

Who should attend: Anyone who owns, operates, manages or services swimming pools or spas at: Apartment Complexes · Hotels · Condominiums · HOAs · Fitness Clubs · Parks or Schools

This workshop is presented by the Sacramento County Environmental Management Department and covers regulations that apply to fencing/gates, signage, chemistry, records/daily logs, recirculation equipment, SVRS, suction covers and more.

Space is limited. To reserve a spot, please contact leesonias@saccounty.gov (Include facility name and number of attendees in email)

Testing the Pool and Spa water – Do you know what’s required?

The water in your pool and spa must be tested for free chlorine and pH every day that the pool is open for swimming. The test results must be kept in a daily log.

DPD free chlorine test is approved



Test strips are not approved



OTO (yellow) chlorine test is not approved



What this means:

The pool and spa shall be tested and recorded daily for pH and chlorine levels. The facility operator shall coordinate to ensure the water is tested daily on days the pool service is not on site. If the results are out of range, the pool/spa should be properly serviced and/or voluntarily closed as needed.

Test Kits

Every facility needs to have a test kit that includes:

- DPD test for Free Chlorine (test daily)
- pH Test (test daily)
- Cyanuric Acid, also known as conditioner/stabilizer. Cyanuric Acid shall be tested and recorded at least once a month and keep below 100 ppm.

Notes

- Most test kits shall be stored in a temperature-controlled area.
- Check test kit chemical expiration dates and replace as needed.
- OTO test kits for free chlorine (yellow comparator) is not approved for use.
- Do not use test strips for daily testing.
- It is recommended to use a high-range test kit to allow for higher chlorine readings.

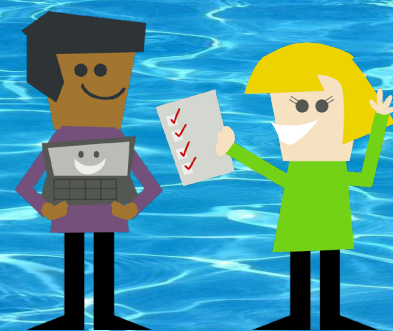
Test the pool/spa daily
Keep daily logs

	Free Chlorine Level Min/ Max		pH	*Cyanuric Acid (CYA)
	No Cyanuric acid/stabilizer used	Cyanuric acid/stabilizer used		
Pools	1 - 10 ppm Cl	2 - 10 ppm Cl	7.2- 7.8	100 ppm max
Spas, Wading Pools, and Spray Grounds	3 - 10 ppm Cl	3 - 10 ppm Cl	7.2- 7.8	100 ppm max

Notes: Pools and spas are required to be closed when free chlorine is below 0.5ppm or above 15.0 ppm. Closure is also required if pH is at or above 8.1.

EMD Plan Review Reminder

If you are changing your pump, filter, chlorinator, SVRS, drain covers, plumbing, or planning to resurface your pool – please visit [Recreational Health Program - Pools and Spas \(saccounty.gov\)](http://saccounty.gov)



Attention Pool/Spa Contractors and Pool/Spa Owners

Information about Suction Covers

Update:

Flow ratings and sump requirements on drain covers have changed.

Why:

The U.S. Consumer Product Safety Commission changed the testing methods for drain covers. Most drain covers now have a lower gallons per minute (GPM) rating or additional sump requirements.

What This Means to You:

Prior to installation, all drain covers must be submitted to EMD Plan Review for approval.

Drain covers will no longer be considered "like-for-like".

The same make and model may not be approved since flow ratings on those covers have changed. Contractors and EMD Plan Review are responsible for ensuring that covers have adequate GPM rating for the system on which they are being installed to ensure safety.

EMD Plan Review Needs the Following to Review Drain Cover Submittals:

- EMD Plan Review Minor Remodel Application and fee payment.*
- Product specification sheet for the proposed drain cover with the flow rating and manufacture date for proposed drain cover. Note: Submittals missing the manufacture/assembly date will be reviewed based on the 2017 VGBA Certification flow rating criteria.*
- Pipe diameter size for all suction lines located under drain cover.*
- Sump information (e.g. existing or non-existing sump, complete dimensions of sump).*

Only a **LICENSED CONTRACTOR** may replace suction covers

The Contractor must have one of the following licenses: (C53, C36, C61, D35)



Replacing suction covers:

Contractor must submit a Recreational Health Plan Review Application to EMD Plan Review prior to starting any work. Once the application is approved and the work is complete, the contractor must submit an AB1020 Compliance Form to EMD within 30 days.

****** It is the pool operator's responsibility to ensure that the contractor complies with these requirements******

Updates and Information

California State Pool Code – The codes that apply to public pools can be found through a link on the EMD website:
<https://emd.saccounty.gov/EH/Pages/RecHealth.aspx>

New Owner/Management? – If your facility has changed ownership or management companies, contact EMD at (916) 875-8440 for any change in information. New or change of ownership will require a new permit to operate.

EMD Payments Online – You can use your credit card to pay health permit fees online. <https://emdpayments.saccounty.gov>

Online EMD Inspection Reports –
<https://inspections.myhealthdepartment.com/sacramento/program-rec-health>

Link to pool documents including plan review applications, AB1020 forms, pool logs, fecal accident procedures, and many more:



<https://emd.saccounty.gov/EMDForms/Pages/EMDForms-EHPools.aspx>

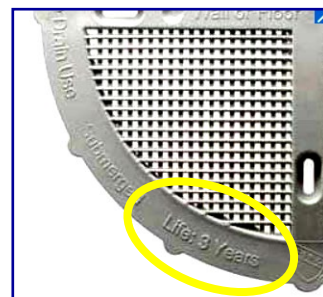


EXPIRED SUCTION COVERS MUST BE REPLACED

**If this cover was installed before 2019,
it is expired!**

Why do suction covers have a lifespan?

Suction covers used in pools and spas are made of materials that can degrade over time from exposure to water, chemicals and sunlight. Due to these factors, the Consumer Product Safety Commission requires manufacturers to mark their covers with the number of years it can be used safely under normal conditions. The lifespan is stamped on the cover and ranges from 3-7 years depending on the manufacturer and model number.



How to Identify Expired Suction Covers

When new suction covers are installed upon approval, an AB 1020 Compliance Form must be submitted to Sacramento County EMD Plan Review for final approval. This form states the make/model of the covers as well as the installed date.

- **FIRST:** Find out the date your covers were installed (it may be noted on the last inspection report).
 - Check your records or contact the contractor who installed the covers to obtain a copy of your AB 1020 Compliance Form. If the contractor is unable to provide the form, make a request through Sacramento County Public Records Act web portal at:
<https://emd.saccounty.gov/Pages/PublicRecordsActRequest.aspx>
- **SECOND:** Look up the lifespan of your suction covers on the manufacturer's website.
- **THIRD:** Count the number of years since it was installed and see if it has exceeded its lifespan.



MyHD Portal

You can now view and track the status of Plan Review projects on MyHD Portal.

Search Plan Review Project at:

<https://inspections.myhealthdepartment.com/sacramento/plan-reviews>

